

# 2020 CALENDAR

MBA  USA  
INC

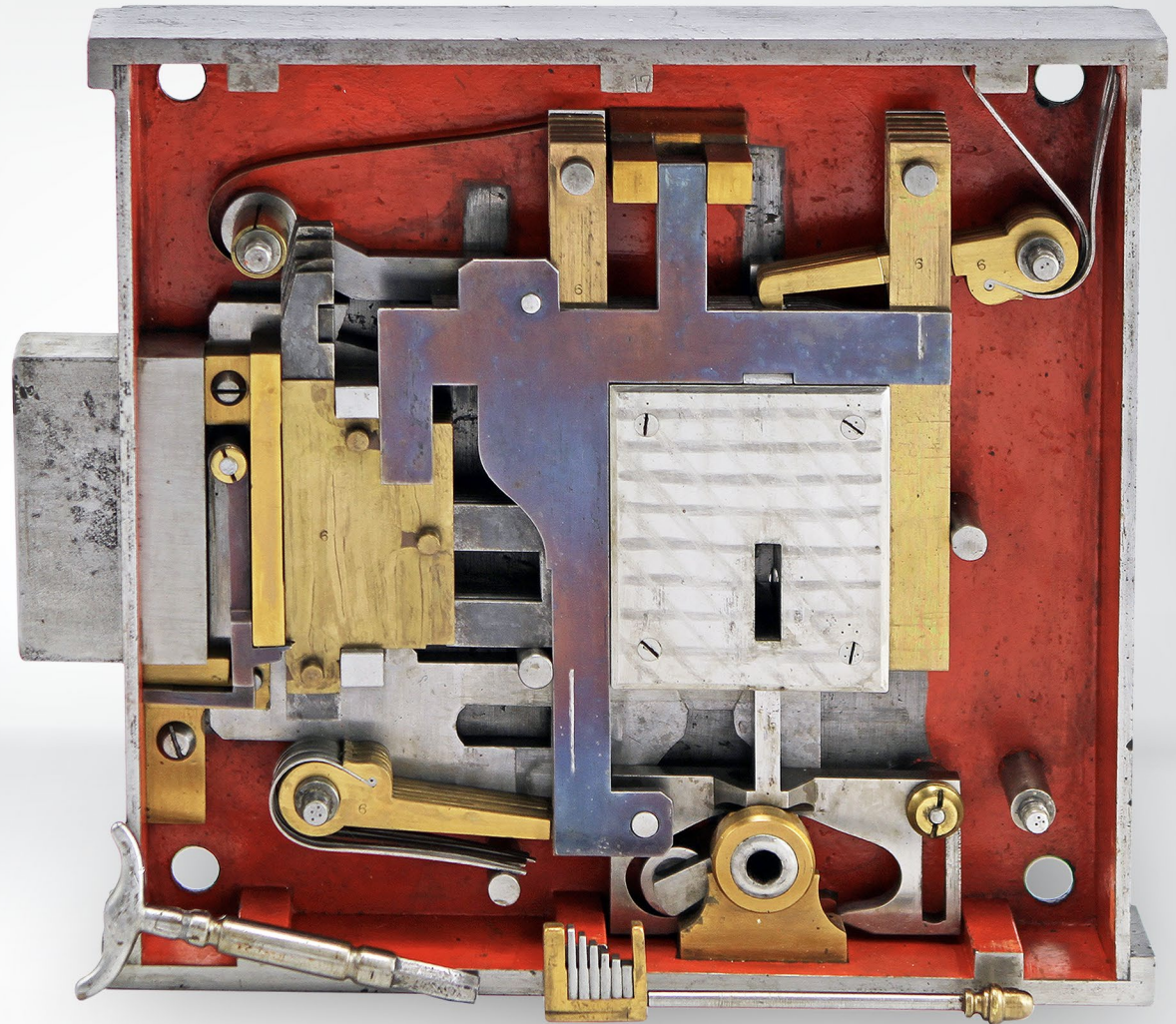
[MBAUSA.COM](http://MBAUSA.COM) | 1(888) 622-5495 | (859) 887-0496



## DAY, NEWELL, & MINER BANK LOCK

A spectacular piece of craftsmanship, the New York-made Day, Newell & Miner lock bears patent dates of 1844, 1851 and 1857. In addition to its remarkable beauty, the lock contains several unusual security features.

The changeable six bit key is inserted into the lock, being left behind when the handle is unscrewed. A separate wrench is inserted into a hole and turned, lifting the bits upwards against the levers. During this process a plate rises within the lock, completely covering the keyhole. Once the bolt is retracted the bit is once again revealed in the keyhole and can be reattached to the handle and removed.



# JANUARY 2020

GLOBAL DISTRIBUTOR OF LOCKS, TOOLS & SECURITY PRODUCTS | **MBA**  **USA**  
INC

<i>SUN</i>	<i>MON</i>	<i>TUE</i>	<i>WED</i>	<i>THU</i>	<i>FRI</i>	<i>SAT</i>
29	30	31	1	2	3	4
5	6	7	8	9	10	11
12	13	14	15	16	17	18
19	20	21	22	23	24	25
26	27	28	29	30	31	1

## H.R.H. DUCHESS OF KENT

Her Royal Highness, Duchess of Kent, was the mother of the future Queen Victoria.

It is a near certainty that the young Victoria used this key to access the "East Garden Gate," presumably the garden at Kensington Palace where she was born in 1819. Victoria ascended the throne in 1837 and ruled Great Britain until her death in 1901.

Thanks to the Honourable William Wallace for contributing to the description of this key.





# FEBRUARY 2020

GLOBAL DISTRIBUTOR OF LOCKS, TOOLS & SECURITY PRODUCTS | **MBA**  **USA**  
INC

<i>SUN</i>	<i>MON</i>	<i>TUE</i>	<i>WED</i>	<i>THU</i>	<i>FRI</i>	<i>SAT</i>
26	27	28	29	30	31	1
2	3	4	5	6	7	8
9	10	11	12	13	14	15
16	17	18	19	20	21	22
23	24	25	26	27	28	29

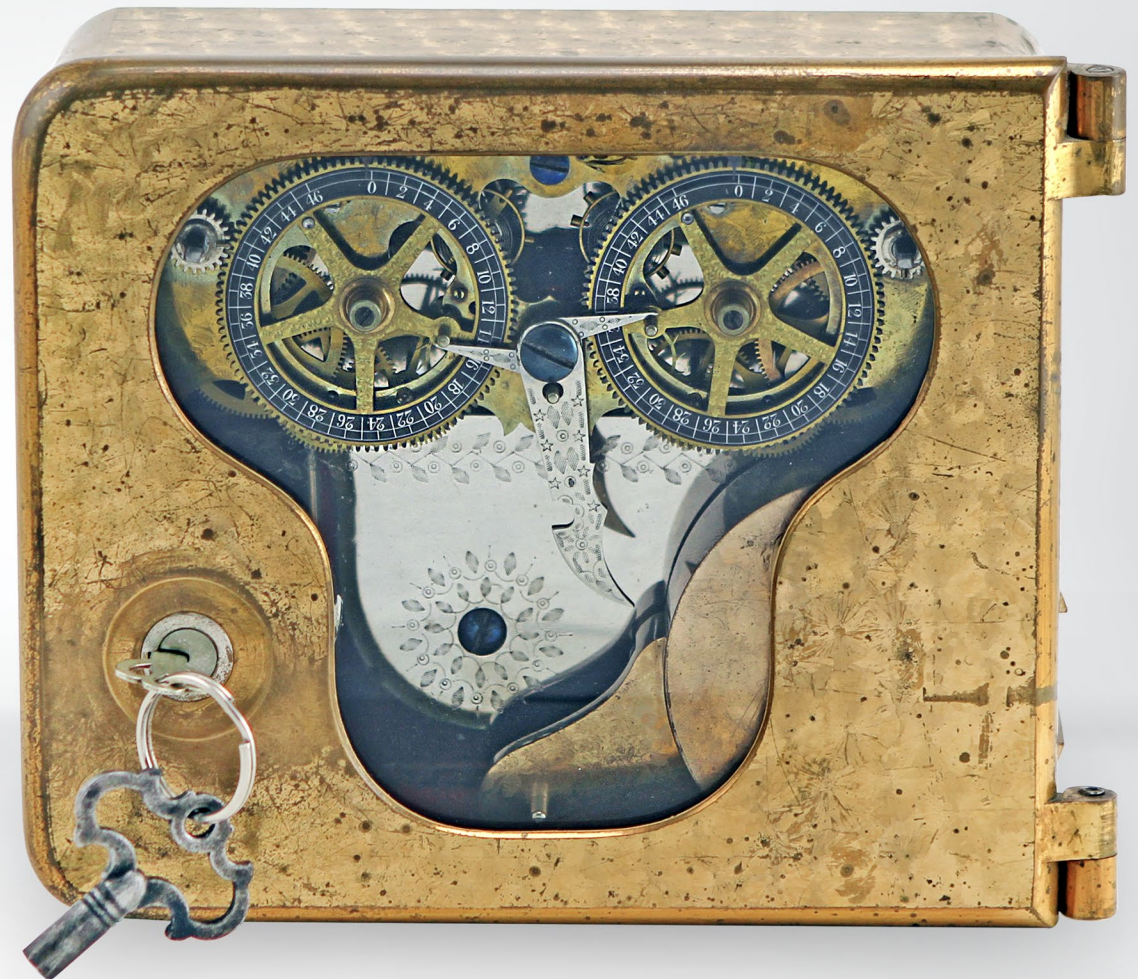
## **SARGENT & GREENLEAF MODEL 2 TIME LOCK**

Made in Rochester, New York in late 1875 or early 1876, this Time Lock represents a very high level of functionality, reliability and beauty.

Specifically, this is Model 2, Variation 3 as described by John Erroll in "American Genius."

The case is covered in decorated gold leaf, and virtually all visible interior parts are highly decorated. This was the last variation where the movement's front plate was engraved with a leaf-and-vine design.

Serial number 435.





# MARCH 2020

GLOBAL DISTRIBUTOR OF LOCKS, TOOLS & SECURITY PRODUCTS | **MBA**  **USA**  
INC

<i>SUN</i>	<i>MON</i>	<i>TUE</i>	<i>WED</i>	<i>THU</i>	<i>FRI</i>	<i>SAT</i>
<b>1</b>	<b>2</b>	<b>3</b>	<b>4</b>	<b>5</b>	<b>6</b>	<b>7</b>
<b>8</b>	<b>9</b>	<b>10</b>	<b>11</b>	<b>12</b>	<b>13</b>	<b>14</b>
<b>15</b>	<b>16</b>	<b>17</b>	<b>18</b>	<b>19</b>	<b>20</b>	<b>21</b>
<b>22</b>	<b>23</b>	<b>24</b>	<b>25</b>	<b>26</b>	<b>27</b>	<b>28</b>
<b>29</b>	<b>30</b>	<b>31</b>	<b>1</b>	<b>2</b>	<b>3</b>	<b>4</b>

## MANGANESE STEEL SALESMAN SAMPLE SAFE

This Salesman Sample Cannonball Safe stands less than 13 inches high.

A salesperson could easily transport models like this to prospective clients to demonstrate the features of their full-sized safes. The crane hinge, bolts, rotating door, etc. all function on this gem of a model.

Patented 1904 and made in New York.





# APRIL 2020

GLOBAL DISTRIBUTOR OF LOCKS, TOOLS & SECURITY PRODUCTS | **MBA**  **USA**  
INC

<i>SUN</i>	<i>MON</i>	<i>TUE</i>	<i>WED</i>	<i>THU</i>	<i>FRI</i>	<i>SAT</i>
29	30	31	1	2	3	4
5	6	7	8	9	10	11
12	13	14	15	16	17	18
19	20	21	22	23	24	25
26	27	28	29	30	1	2

## ROYAL GARDENS KEW

Kew Gardens in London formally opened in 1759, but its origins can be traced back to as far as 1299.

This early key to the park is masterfully and profusely engraved with foliate and floral motifs on virtually every available surface.

The original owner of the key is unknown, but most assuredly held a very high position to have personal access to the then-private park.

Thanks to the Honourable William Wallace for contributing to the description of this key.





# MAY 2020

GLOBAL DISTRIBUTOR OF LOCKS, TOOLS & SECURITY PRODUCTS | **MBA**  **USA**  
INC

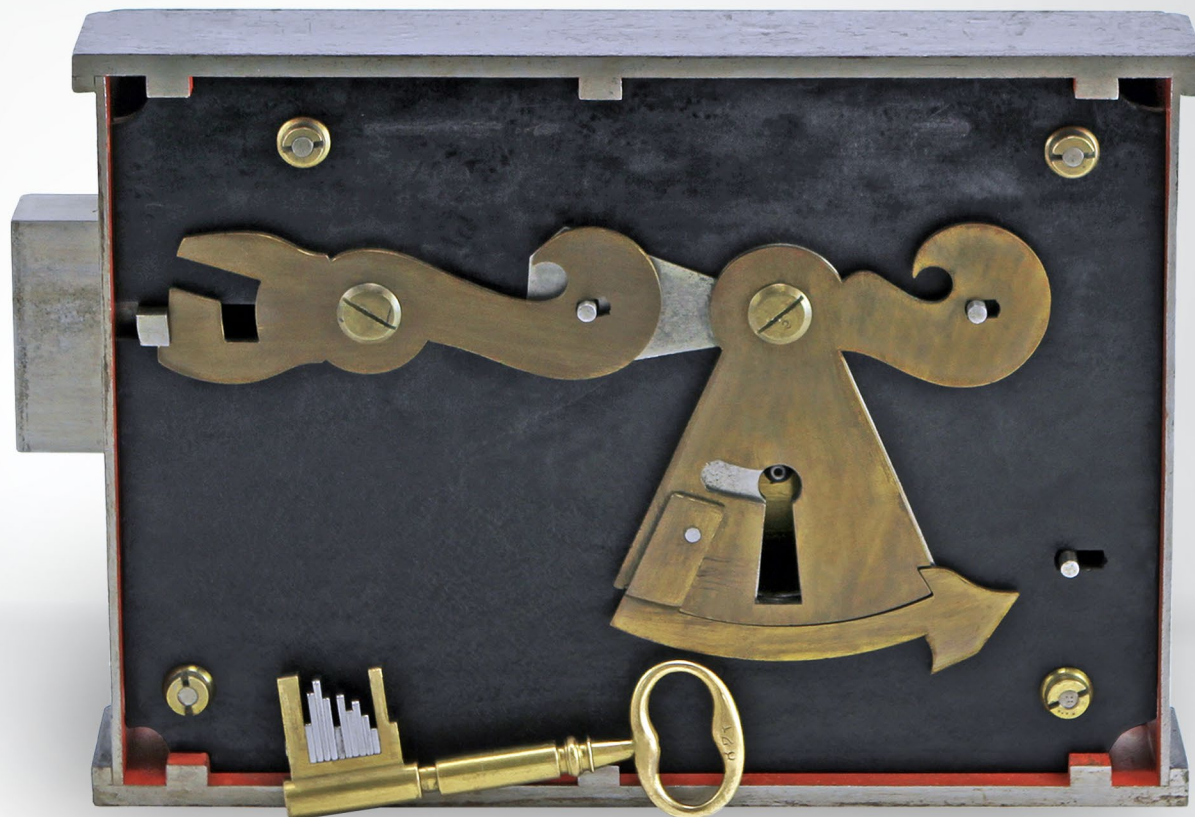
SUN	MON	TUE	WED	THU	FRI	SAT
26	27	28	29	30	1	2
3	4	5	6	7	8	9
10	11	12	13	14	15	16
17	18	19	20	21	22	23
24	25	26	27	28	29	30
31	1	2	3	4	5	6

## DAY & NEWELL PARAUTOPTIC BANK LOCK

Bearing patent dates of 1838-44 and June 10, 1851, this gorgeous 10 lever lock was made in New York.

Originally called "The New American Permutating Lock," it is generally referred to now by the Parautoptic name, which means "hidden from view."

This pertains to the fact that the workings of the lock are concealed from view through the keyhole once the key (or a picking tool) is inserted and turned.



# JUNE 2020

GLOBAL DISTRIBUTOR OF LOCKS, TOOLS & SECURITY PRODUCTS | **MBA**  **USA**  
INC

<i>SUN</i>	<i>MON</i>	<i>TUE</i>	<i>WED</i>	<i>THU</i>	<i>FRI</i>	<i>SAT</i>
31	1	2	3	4	5	6
7	8	9	10	11	12	13
14	15	16	17	18	19	20
21	22	23	24	25	26	27
28	29	30	1	2	3	4

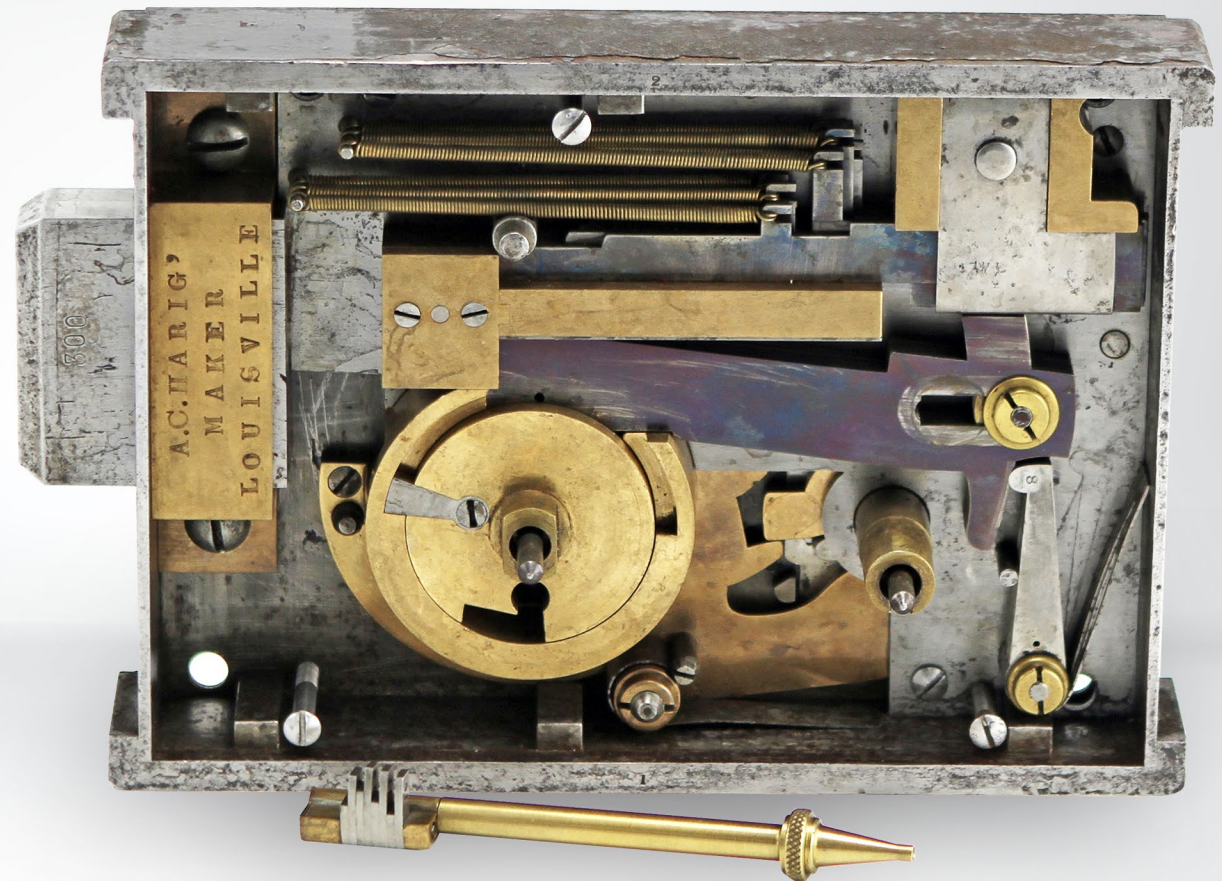


## HARIG & STOY BANK LOCK

This 1854 lock was made in Louisville, Kentucky and uses a changeable-bit key with a very unusual profile.

The key bit is inserted into the lock and then the handle unscrewed, leaving the bit behind. A separate wrench (not shown) is then inserted and turned, which brings the bits against the eight levers. This wrench is then inserted into a separate hole to turn and allow the bolt to retract.

The lock can be rekeyed by rearranging the bits when the bolt is retracted.



# JULY 2020

GLOBAL DISTRIBUTOR OF LOCKS, TOOLS & SECURITY PRODUCTS | **MBA**  **USA**  
INC

<i>SUN</i>	<i>MON</i>	<i>TUE</i>	<i>WED</i>	<i>THU</i>	<i>FRI</i>	<i>SAT</i>
28	29	30	1	2	3	4
5	6	7	8	9	10	11
12	13	14	15	16	17	18
19	20	21	22	23	24	25
26	27	28	29	30	31	1

## PORTMAN SQUARE

Portman Square is east of Oxford Street in central London. Built for the wealthy, the square began its development around 1765 and became a center for upper class living. The still private gardens remain intact and shady.

Not much can be found regarding the owner of this key. However, mention is made in an 1825 edition of "The Gentleman's Magazine" of the marriage of a daughter of Lt. Colonel R. Bull in March of that year. In addition, a Captain Robert Bull is noted in several histories of Waterloo. One such book even references "Letters of Colonel Robert Bull in the Peninsula and Waterloo." Whether this is the same R. Bull who owned this key is debatable, but of keen interest.

Thanks to the Honourable William Wallace for contributing to the description of this key.





# AUGUST 2020

GLOBAL DISTRIBUTOR OF LOCKS, TOOLS & SECURITY PRODUCTS | **MBA**  **USA**  
INC

<i>SUN</i>	<i>MON</i>	<i>TUE</i>	<i>WED</i>	<i>THU</i>	<i>FRI</i>	<i>SAT</i>
26	27	28	29	30	31	1
2	3	4	5	6	7	8
9	10	11	12	13	14	15
16	17	18	19	20	21	22
23	24	25	26	27	28	29
30	31	1	2	3	4	5

## **SARGENT & GREENLEAF MAGNETIC BANK LOCK**

Made in Rochester, New York about 1867, this is a fine example of one of Sargent & Greenleaf's most beautiful and innovative locks.

Early attempts at lock manipulation relied upon applying turning pressure on the safe handle to force the lock's bolt inwards. James Sargent's clever rollerbolt design completely stopped that type of attack. In addition, the horseshoe magnet in the lock was designed to "float" the fence above the wheels.

This prevented even Sargent himself from reading the gate positions using his Micrometer manipulation tool.

Serial number 383.



# SEPTEMBER 2020

GLOBAL DISTRIBUTOR OF LOCKS, TOOLS & SECURITY PRODUCTS | **MBA**  **USA**  
INC

<i>SUN</i>	<i>MON</i>	<i>TUE</i>	<i>WED</i>	<i>THU</i>	<i>FRI</i>	<i>SAT</i>
30	31	1	2	3	4	5
6	7	8	9	10	11	12
13	14	15	16	17	18	19
20	21	22	23	24	25	26
27	28	29	30	1	2	3

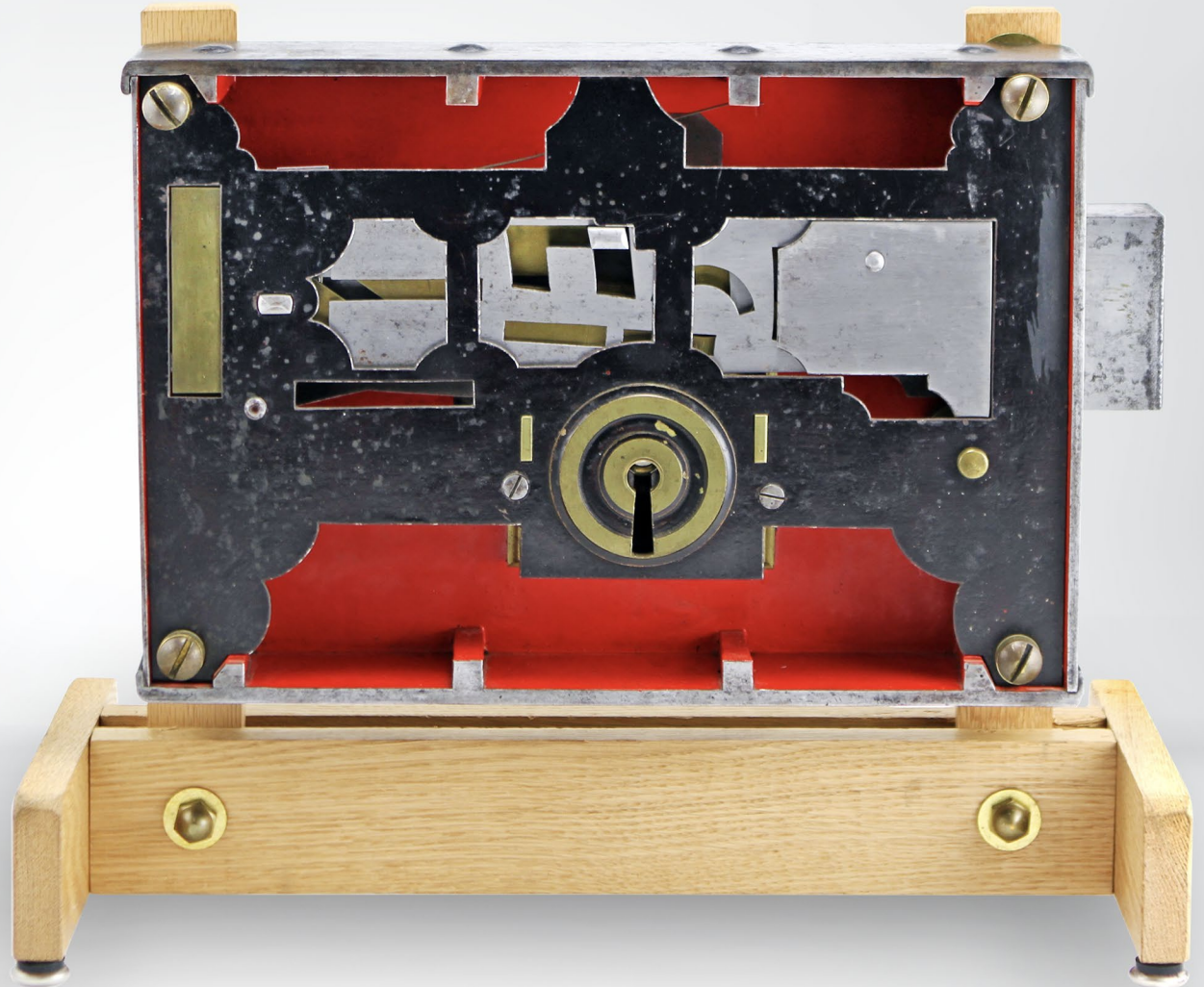


## SOLOMON ANDREWS BANK LOCK

This huge exhibition piece contains 17 changeable levers and includes a Detector Device, which alerts the owner if an attempt has been made to pick the lock.

The original cutaway exhibition cover allows you to see the precision movements of the levers when the key is turned.

Made by Solomon Andrews in Perth Amboy, New Jersey about 1842.



# OCTOBER 2020

GLOBAL DISTRIBUTOR OF LOCKS, TOOLS & SECURITY PRODUCTS | **MBA**  **USA**  
INC

<i>SUN</i>	<i>MON</i>	<i>TUE</i>	<i>WED</i>	<i>THU</i>	<i>FRI</i>	<i>SAT</i>
27	28	29	30	1	2	3
4	5	6	7	8	9	10
11	12	13	14	15	16	17
18	19	20	21	22	23	24
25	26	27	28	29	30	31

## THE HONOURABLE JOHN ST. JOHN

Chesterfield Gate is an entrance to Greenwich Park in London.

The park was the first of the Royal Parks to be enclosed (in 1433), and houses the Royal Observatory as well as other notable buildings. This key belonged to the Honourable John St. John, which allowed him personal access to the then-gated park.

St. John was born in 1725 and died in 1767, and inherited the title of Baron St. John upon the death of his father in 1757. This key would date to about 1750.

Thanks to the Honourable William Wallace for contributing to the description of this key.





# NOVEMBER 2020

GLOBAL DISTRIBUTOR OF LOCKS, TOOLS & SECURITY PRODUCTS | **MBA**  **USA**  
INC

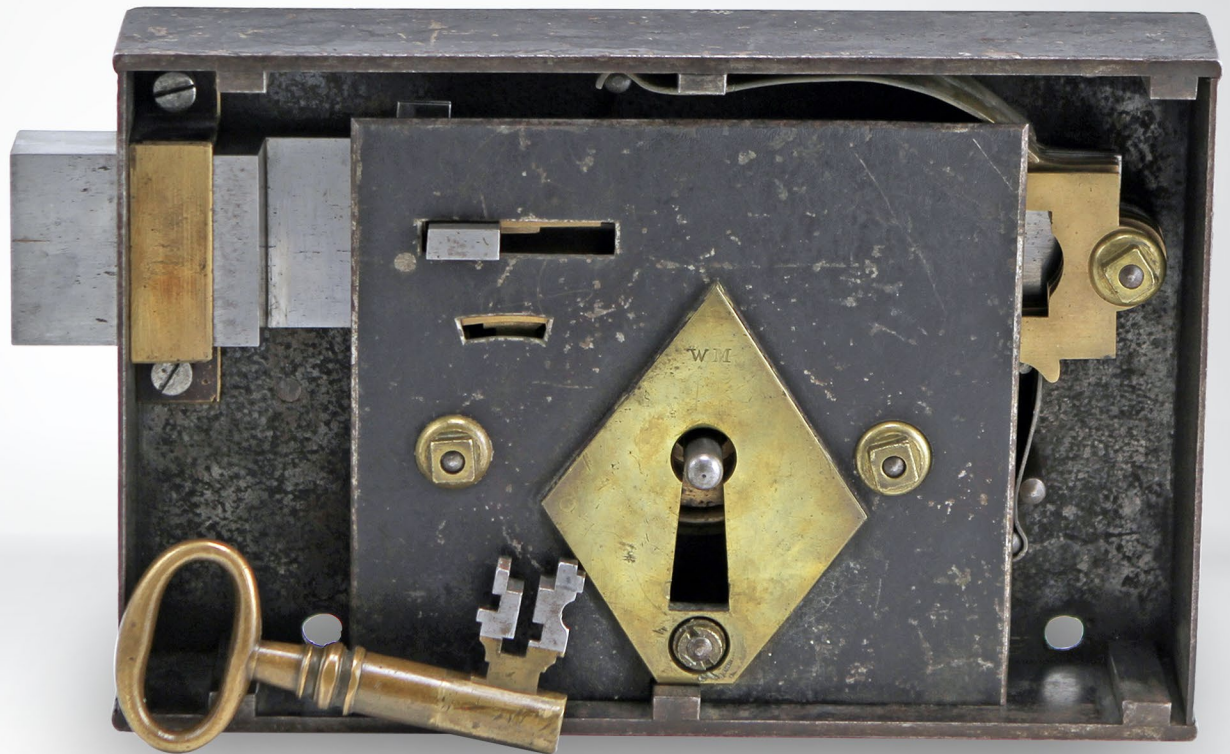
<i>SUN</i>	<i>MON</i>	<i>TUE</i>	<i>WED</i>	<i>THU</i>	<i>FRI</i>	<i>SAT</i>
<b>1</b>	<b>2</b>	<b>3</b>	<b>4</b>	<b>5</b>	<b>6</b>	<b>7</b>
<b>8</b>	<b>9</b>	<b>10</b>	<b>11</b>	<b>12</b>	<b>13</b>	<b>14</b>
<b>15</b>	<b>16</b>	<b>17</b>	<b>18</b>	<b>19</b>	<b>20</b>	<b>21</b>
<b>22</b>	<b>23</b>	<b>24</b>	<b>25</b>	<b>26</b>	<b>27</b>	<b>28</b>
<b>29</b>	<b>30</b>	<b>1</b>	<b>2</b>	<b>3</b>	<b>4</b>	<b>5</b>

## DAY, NEWELL, & DAY BANK LOCK

This 1836 patent lock was made in New York.

The huge, robust key is made of brass and steel with the two materials dovetailed together.

The remarkable features of this lock include levers that are lifted by the key, levers that are pulled down by the key and levers that are moved sideways!



# DECEMBER 2020

GLOBAL DISTRIBUTOR OF LOCKS, TOOLS & SECURITY PRODUCTS | **MBA**  **USA**  
INC

<i>SUN</i>	<i>MON</i>	<i>TUE</i>	<i>WED</i>	<i>THU</i>	<i>FRI</i>	<i>SAT</i>
29	30	1	2	3	4	5
6	7	8	9	10	11	12
13	14	15	16	17	18	19
20	21	22	23	24	25	26
27	28	29	30	31	1	2



Thank you for being a valued customer of MBA USA.  
As a token of our appreciation, please enjoy this 2020 Calendar.

Sincerely,  
**MBA USA, Inc.**