



**KEY MACHINES** P2



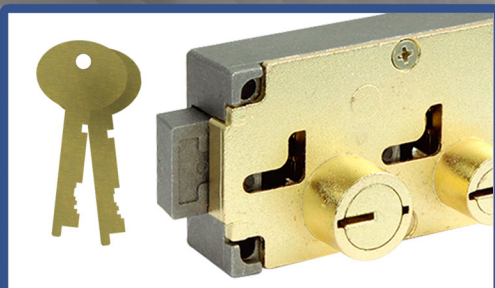
**TOOLS & SUPPLIES** P4



**ELECTRONIC SAFE LOCKS** P7



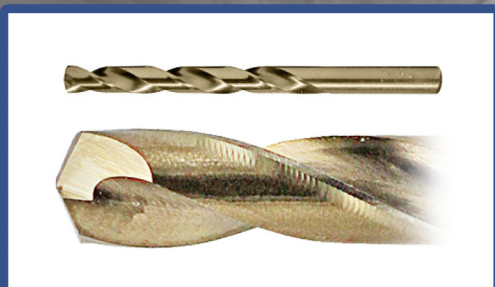
**MECHANICAL SAFE LOCKS** P8



**SAFE DEPOSIT LOCKS** P9



**PICKS & BYPASS** P6



**DRILLING & CUTTING** P5



**EDUCATION & TRAINING** P10

# MBAUSA



## TOOLS & TRAINING

2019 QUARTER 3 CATALOG

(888) 622-5495 / MBAUSA.COM



# TOOLS & TRAINING FOR SECURITY PROFESSIONALS.

## MBA USA

### TABLE OF CONTENTS

Introduction .....	1
Key Machines .....	2
Storefront & Commercial Hardware .....	3
General Locksmith Tools & Supplies .....	4
Drilling & Cutting Tools .....	5
Lock Picks & Bypass Tools .....	6
Electronic Safe Locks .....	7
Mechanical Safe Locks .....	8
Safe Deposit Locks .....	9
MBA USA Security Training .....	10

### HOW TO GET STARTED

1. Create a free user account on MBAUSA.com.
2. Log in to your user account on MBAUSA.com.
3. Shop thousands of products on MBAUSA.com.

### PRICING & PRODUCTS

We reserve the right to change prices at any time and without notice. We may also change the contents of kits without notice by adding to, removing or substituting items as described in this catalog. Items restricted to locksmiths and security professionals are labeled. We are always happy to quote you current prices at the time you order any product. And remember, our website is more current than the catalog, so please log on often to check prices and new items added after the printing of this publication. Errors and omissions are subject to correction.

Entire Contents © MBA USA, Inc.



### MBA USA, INC.

200 Orchard Drive  
Nicholasville, KY 40356  
United States

### MBAUSA.com

Toll Free: 1 (888) MBA-5495  
Local: 1 (859) 887-0496  
Email: sales@mbausa.com

### BUSINESS HOURS:

8:30 a.m. - 5:00 p.m. ET  
Monday - Friday



THOUSANDS OF PRODUCTS  
ON MBAUSA.COM!



## KEY MACHINES

### ILCO

#### BRAVO III SEMI-AUTOMATIC KEY MACHINE

The Bravo III key machine is provided with the CU50A cutter and a corresponding cutter guide. The durable cobalt steel cutter ensures a smooth, clean, accurate cut. Designed to duplicate common cylinder and automotive key blanks as well as Titan® and older GM® with 90 degree first cut biting characteristics.

#KIC-BRAVO III.....\$1,999.00



### ILCO

#### DUO PLUS KEY MACHINE

The Ilco Duo Plus is an innovative, dual carriage machine that cuts cylinder, vehicle and cruciform keys (left-hand carriage) as well as bit, double bit, flat style (safe, safety deposit, mailbox) and special keys such as Abus® and Abloy® type keys (right-hand carriage).

#KIC-BH0058XXXX.....\$1,499.00



### ILCO

#### FLASH 008 SILCA COMPACT KEY DUPLICATOR

Lightweight, compact and portable. This mechanical, edge cut key duplicator model is an ideal choice for on-site, mobile jobs or counter tops where space may be limited. The Flash 008 will easily duplicate most edge cut cylinder, cruciform, large bow and long blade keys; including the larger, oversize style automotive keys.

#KIC-FLASH008B.....\$499.00



### ILCO

#### SILCA SPEED 044 SEMI-AUTOMATIC DUPLICATOR

Designed for duplicating edge cut automotive, residential and commercial keys. The semi-automatic design allows the operator to duplicate keys with speed and accuracy. Once keys are loaded, the spring loaded carriage is engaged by the press of a button. The lever is then moved manually to control the carriage movement during the cutting cycle.

#KIC-044SPEED.....\$1,032.00



### ILCO

#### SILCA SPEED 045 MANUAL DUPLICATOR

Designed for duplicating edge cut/flat style keys, the Speed 045 offers accurate and economical key cutting. This manual model is an ideal basic duplicator for any key cutting outlet. The Speed 045 is designed to duplicate edge cut automotive, residential and commercial keys and includes features that any user will readily appreciate.

#KIC-045SPEED.....\$834.00



### ILCO

#### SILCA SPEED 046 MECHANICAL DUPLICATOR

Designed to duplicate flat type keys (Safe and Safe Deposit type) and includes features that any user will readily appreciate. The modern, open style, safety details and operational features make this model a choice model for store or shop and with the included mounting bracket. Excellent for mobile use.

#KIC-046SPEED.....\$899.00



### HPC LOCKSMITH TOOLS

#### PUNCH MACHINE

Completely portable, punches accurate keys by code quickly and effortlessly. Easy to change from one manufacturer to another because depth and space adjustments are not required. Code cards have depth and space indicators, plus all the pertinent information such as punch, jaw, code series, blanks and any special information you need.

#HPC-1200PCH.....\$1,519.00



### BORKEY

#### EUROLINE KEY MACHINE

The Euroline Key Machine by Borkey is a semi-automatic key cutting machine for cutting of cylinder, car and cross keys up to 100 mm. The key machine comes with a tool pouch and the Step Up/Down Voltage Converter 110/220V, 750 watts (STU-750).

#BOR-396.....\$2,995.00



LOG IN AS A SECURITY PROFESSIONAL  
TO ACCESS SPECIAL PRICING & MORE!

(888) 887-0496 | 2



ILCO

**HOOK BOLT STOREFRONT LOCK PACKAGE**

Backset hook bolt lock, 2 faceplates (Bronze & Aluminum), 2 Schlage C 1" mortise cylinders (KA) and pair of keys.

- 1-1/8" Backset, Aluminum Cylinders
- 1-1/8" Backset, Bronze Cylinders
- 31/32" Backset, Aluminum Cylinders
- 31/32" Backset, Bronze Cylinders

#KIC-HB185F.....\$21.77



ILCO

**DEAD BOLT STOREFRONT LOCK PACKAGE**

Backset dead bolt lock, 2 faceplates (Bronze & Aluminum), 2 Schlage C 1" mortise cylinders (KA) and pair of keys.

- 1-1/8" Backset, Aluminum Cylinders
- 1-1/8" Backset, Bronze Cylinders
- 31/32" Backset, Aluminum Cylinders
- 31/32" Backset, Bronze Cylinders

#KIC-185F.....\$21.77



ILCO

**LATCH BOLT STOREFRONT LOCK PACKAGE**

Includes a backset latch bolt lock, 2 faceplates (Bronze & Aluminum), 2 Schlage C 1" mortise cylinders (KA) and pair of keys.

- 1 1/8" Backset (LH/RH), Aluminum Cylinders
- 1 1/8" Backset (LH/RH), Bronze Cylinders
- 31/32" Backset (LH/RH), Aluminum Cylinders
- 31/32" Backset (LH/RH), Bronze Cylinders

#KIC-451F.....\$25.90



ILCO

**MORTISE & RIM CYLINDER ACCESSORY KIT**

Includes 10 mortise cams from Standard, Adams Rite, Clover, Yale, Narrow, Marks, Corbin/Ruswin and Dominion. Mortise cam screws (20), standard/extra long tailpieces (10/ea), standard/extra long break-off screws (10/ea), rim mounting plates (10), "C" clips (10) and #1 pint Phillips hex drive.

#KIC-876.....\$59.95



KEEDEX TOOLS

**SPINDLE MARKING TOOL**

Designed to mark the spindle at the desired length for a precise cut. After your lock is properly mounted insert your dial into the dial ring and slide the marking tool onto the spindle. Rotate the dial until the marking tool inserts into the lever arm. Putting pressure on the blade, turn the dial a few clockwise revolutions. After you have spun the dial you can remove the marking tool and dial.

#K-SMT.....\$42.58



KEEDEX TOOLS

**SPIN-OUT MORTISE CYLINDER SCREWDRIVER**

Designed to remove cam screws on mortise cylinders. Features a screwdriver with an oversized handle for extra torque. Four sizes of interchangeable screwdriver bits are included, two slotted and two Phillips. Also includes stand, with bronze bearing, to prevent the screwdriver from slipping. Allows you to provide constant, even pressure to the screws.

#K-SPIN.....\$82.00



ILCO

**4" KICK DOWN HOLDER**

Flip the holder down to keep the door open, and flip the door up to close. Strong and durable with installation screws included. **Three finishes:**

- #KIC-KDDH4DU (Bronze).....\$7.95
- #KIC-KDDH4AL (Aluminum).....\$7.95
- #KIC-KDDH4BLK (Black).....\$7.95



KEEDEX TOOLS

**ARMORED DOOR LOOPS, I.D. FLEX**

Used when you need to transfer low-voltage electrical current from the door frame to the door. Assembly has attractive, durable finish. Multiple finishes available:

- #K-DLA (18" Alum, 1/4" ID).....\$20.90
- #K-DLB (18" Bronze, 1/4" ID).....\$20.90
- #K-DL38A (18" Alum, 3/8" ID).....\$24.45
- #K-DL38B (18" Bronze, 3/8" ID).....\$24.45
- #K-DLA24 (24" Alum, 1/4" ID).....\$21.35



HPC LOCKSMITH TOOLS

**KEY CABINET SINGLE TAG, 8 OR 30 KEY CAPACITY**

Single-Tag KeKab® Key Cabinets by HPC Locksmith Tools provide storage for up to 8 or 30 keys. The small sized cabinets are perfect for homes, apartments and small businesses. Cabinets come complete with numbered tags, key control tags and hardware for mounting.

- #HPC-KEKAB-8 (8 Keys).....\$27.35
- #HPC-KEKAB-30 (30 Keys).....\$35.00



HPC LOCKSMITH TOOLS

**INVENTORY TAGS, 100 PER PACK**

These tags offer a quick visual method of controlling key blank inventory. Simply mount these bright yellow tags directly on the hook in front of your determined "order point." They are printed in black and red on heavy card stock with a metal grommet.

#HPC-INV-1.....\$19.00



MAJOR MANUFACTURING

**STANDARD KEE-BLOK FOR DOOR KNOBS**

Blocks existing keys from being inserted on 90% of knob-locks in seconds. Also fits over padlocks. Made of high strength aluminum alloy. Keyed alike to code MMC21. Keyed-different also available.

- #MS-A100-KAMMC21 (Keyed Alike).....\$32.50
- #MS-A100-KD. (Keyed Different).....\$29.95

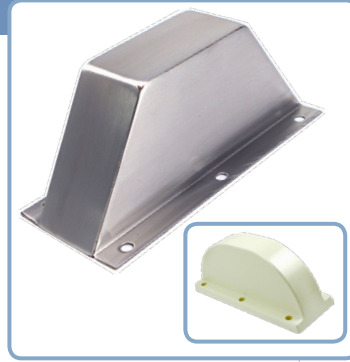


KEEDEX TOOLS

**PROTECT-A-LOK COVERS**

Designed to protect locks and hardware from damage, Protect-A-Lok covers are virtually indestructible. Used in areas where locks may have a chance of getting hit by carts, forklifts, vehicles or other items. Can be used with levers, knobs, panic hardware and more. Two options available.

- #K-12 (Lexan).....\$25.35
- #K-12S (Stainless Steel).....\$85.20



HPC LOCKSMITH TOOLS

**NUMBERED LOANER TAGS #1 - #20, PACK OF 20**

Pack of 20 Numbered Loaner Tags, #1 - #20, used in key cabinets or other forms of key storage. Each tag has a folding loop which snaps into the top of the key tag, securing the key. White tags with black numbers.

#HPC-NLT-1-20.....\$10.50

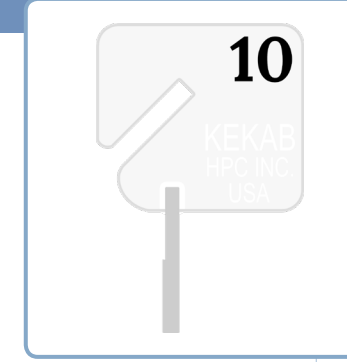


HPC LOCKSMITH TOOLS

**NUMBERED TAGS, #1 - #30, PACK OF 30**

Numbered key tags by HPC Locksmith Tools, for use in key cabinets and key storage. Each tag in the package includes a metal snap hook to connect each key. White tags with black numbers. Plain tags also available.

- #HPC-NT-1-30 (Numbered, 1-30).....15.50
- #HPC-PLT-20 (Plain, 20-pack).....7.25





## SOUBER TOOLS

### DBB DOOR LOCK MORTICER STANDARD KIT

Cuts a mortice for lock body AND faceplate. Vertical guides, plus height/depth stops mean you cut *only* where you want, nowhere else. Comes with 3 Carbide Tipped Wood Cutter Bits (3/4", 7/8" and 1") and 4" Standard Boring Shaft in a hard-plastic carrying case.

#PSJIG1.....\$349.00



## STRONGARM

### MAGNETIC DRILL PRESS

Light weight, no power necessary. Attach any power drill to ferrous metal surfaces for easier, faster, more accurate drilling while helping prevent user fatigue and injuries. For use with wired, mains-operated drilling machines, the magnetic stand is designed for use with core or solid drills on ferromagnetic workpieces. Works horizontally, vertically or overhead.

#SA-MAG-MX-V.....\$769.00



## MBA USA, INC.

### FENCE DRILLING GUIDE

Assists in removing the fence of mechanical combination locks. Drilled hole must be 1/4" or more. Safe door thickness from the outside surface to the lock should be no more than 3". After drilling, slide the guide over the fence, so it bottoms out on the lever. Use the included drill bit to drill off the fence. Improved design has a hex end so the guide can be held steady with a wrench, rather than by hand.

#MB47-A.....\$25.00



## STRONGARM

### STRONGARM 2 CARBIDE DRILL BITS

Vacuum brazed with copper to stand extreme temperature. 5-axis diamond ground titanium tungsten carbide tips. Fluting designed for quick removal of materials reduces clogging.

#SA2C (3/16" x 4").....\$6.20  
 #SA2C (1/4" x 4").....\$6.95  
 #SA2C (5/16" x 5").....\$7.95  
 #SA2C (1/4" x 6").....\$7.95  
 #SA2C (5/16" x 8").....\$8.95



## PORTER-CABLE

### PORTER CABLE FORSTNER BITS

Porter-Cable Forstner Bits have optimized cutting angles for flat bottom holes. Open tooth design drills clean, fast holes with smooth finish. The bits are made of hardened steel for durability and a long service life. Two sizes available.

#PC1013 (1-1/8").....\$17.52  
 #PC1015 (1-1/4").....\$18.64



## DEWALT

### HEAVY DUTY 1/2" 2-SPEED HAMMERDRILL

Heavy Duty 1/2" 2-Speed Hammerdrill. Can be set to either drill or hammerdrill mode. Includes a 2-speed range for high speed drilling or torquing. Soft grip handle and two-finger trigger increases user's comfort and control.

#HD02.....\$189.95



## MBA USA, INC.

### CROSS PICK TRYOUT KEY PACK

A convenient package of Cross Pick Tryout Keys that will work on locks that have pins in 3 or 4 rows. Excellent addition to have in any locksmith's tool kit. Each set includes 5 keys.

#MB107.....\$34.95



## SOUTHORD

### JACK KNIFE PICK SET

The Jack Knife Pick Set features tempered stainless steel picks, knurled stainless steel set screw for a positive lockup and a hard alloy handle for increased durability. Actual size 3-1/2" long and 1/4" thick. Handy, convenient tool for locksmiths and technicians.

#SO-JPKS-6W.....\$39.95



## COBALT TOOLS

### JOBBER LENGTH DRILL BITS

The 135° tip angle/split point eliminates drill "walking" when beginning drill hole.

#COB125 (1/8" X 2-3/4").....\$2.10  
 #COB156 (5/32" X 3-1/8").....\$2.35  
 #COB187 (3/16" X 3-1/2").....\$2.80  
 #COB250 (1/4" X 4").....\$4.15  
 #COB312 (5/16" X 4-1/2").....\$6.40  
 #COB375 (3/8" X 5").....\$8.90



## MBA USA, INC.

### LONG END MILLS

Four flute, center cutting extra long end mills. Corner radius to reduce chipping and provide longer tool life. Four sizes available; solid carbide, made in the USA.

#LEM250-4 (1/4" X 4").....\$40.00  
 #LEM312-4 (5/16" X 4").....\$45.00  
 #LEM375-4 (3/8" X 4").....\$50.00  
 #LEM250-6 (1/4" X 6").....\$52.00



## SOUBER TOOLS

### KEY JIGGLERS, SET OF 6

A set of 6 Jiggler Keys to help open a wide array of residential and automotive locks. Combines the tension tool and hand pick, thereby speeding up and aiding opening technique. Three sizes available, instructions included with each set.

#PS13-A (Regular).....\$24.95  
 #PS13-B (Mini).....\$14.95  
 #PS13-C (Micro).....\$15.50  
 #PS13-D (All 3 Sets).....\$48.00



## SOUBER TOOLS

### PLUG SPINNER

The Plug Spinner is a handy tool when a lock is picked in the wrong direction, and you don't want to start over. Use the Plug Spinner to rotate the plug super fast in the right direction without relocking. Simply pre-set the nose, insert the blade and press the button. The result: a lock that is now picked in the correct direction.

#PS2.....\$24.95



## SOUBER TOOLS

### TUBULAR LOCK SAW

The Tubular Lock Saw by Souber Tools is a simple, effective cutter for drilling out tubular or radial type locks which cannot be readily picked.

#PSTLC1.....\$29.95

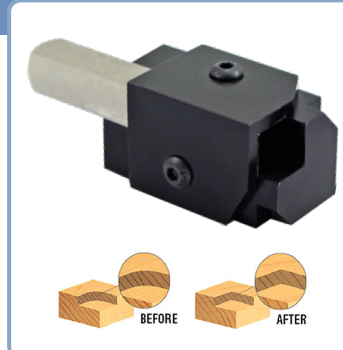


## TIMBERLINE TOOLS

### CORNER CHISEL

Easily cuts 90° corners to square off circular edges. Simply line the straight edges of the cut and strike the edge with a hammer. Precision ground high speed steel. Can also be used to square mortise cutouts for hinges, strike plates, latch faces, etc.

#AT-3420.....\$9.95

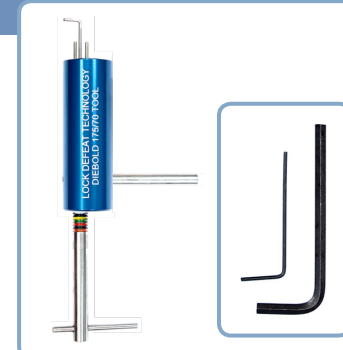


## LOCK DEFEAT TECHNOLOGY

### DIEBOLD 175-70 PICK

One of the finest picks for the Diebold 175-70. Colored indexing makes it easy to know which lever you are working on in the lock. Once the lock is picked open it can then be reset to a new renters key.

#LD01.....\$269.00



## MBA USA, INC.

### MOSLER SAFE DEPOSIT TOOL

Combines the functionality of two separate service tools into a single design. After pulling the renter plug on a Mosler 3175, 3210 or 5700, the tool can be used to rotate the cam, or "foot", inside the lock to quickly retract the bolt and open the door. After opening, the renter nose can be re-staked and lock reused.

#MB25.....\$95.00





# ELECTRONIC SAFE LOCKS

## SARGENT & GREENLEAF

### S&G NEXUS-IP PACKAGES

Monitor and control network activity in real-time. Easy to install Internet Protocol (IP) locking system. Change access, set schedules, receive live alerts remotely. WIFI connection.

- #SG3006-502: Pivot Bolt
- #SG3007-502: Direct Drive
- #SG3028-502: Motor Retracting Direct Drive
- #SG3029-502: Motor Retracting Pivot Bolt

Call for pricing! Software sold separately.



## SARGENT & GREENLEAF

### S&G BASIC SWINGBOLT LOCK PACKAGE

Highly popular swingbolt lock package with bright chrome keypad. Simple Programming: 1-Master and 1-User Code. Operating and installation instructions included in package.

- #SG-BASIC-BC.....\$49.83



## SARGENT & GREENLEAF

### S&G 6804 KEY-OP LOCK, KEY RETAINING

S&G 6804 Key Operating Safe Lock. Same footprint as most modern mechanical and electronic safe locks. Changeable. Comes with escutcheon and pair of operating keys (about 5-1/2" overall length).

- #SG6804-049.....\$67.09



## SARGENT & GREENLEAF

### S&G 6870 FAS KEY LOCK WITH 2 KEYS

S&G 6870 series changeable key operated safe lock meets U.L. Standard 437 as a security container lock. Same mounting footprint as S&G standard size combination locks. Key hole position is in the same place as the spindle hole. Includes two 115mm precut keys for safe doors up to 4.22" thick.

- #SG6870-008.....\$72.56



## TECNOSICUREZZA

### MINITECH LOCK PKG, DALLAS KEY READER

Dynamic 1-time codes and time lock features increase security where access to a safe can be made by external personnel. Restrict access within recurring daily times. Set closing periods and/or unique opening periods. Ideal for banks, cash-in-transit and large retailers.

- #MINITECH-ROTO (Roto Bolt).....\$363.14
- #MINITECH-DB (Dead Bolt).....\$368.18
- #MINITECH-SP (Spring Bolt).....\$372.61



## TECNOSICUREZZA

### TECHMASTER LOCK PKG, DALLAS KEY READER

Each keypad can control up to 5 locks, each managed with many programmable features. Perfect to eliminate use of mechanical keys or managing safes with several lockable internal compartments. Smartphone app available.

- #TECHMASTER-ROTO (Roto Bolt).....\$434.26
- #TECHMASTER-DB (Dead Bolt).....\$438.57
- #TECHMASTER-SP (Spring Bolt).....\$443.85



## LAGARD

### LG2270 KEY LOCK, 3" KEYS, SCREW-ON ESCUTCHEON

Includes LG2270 U.L. Type 2, 4-wheel key lock with pair of 3" keys and screw-on, flip cover escutcheon. Installation items and operating instructions also included.

- #LG2270-3.....\$79.65

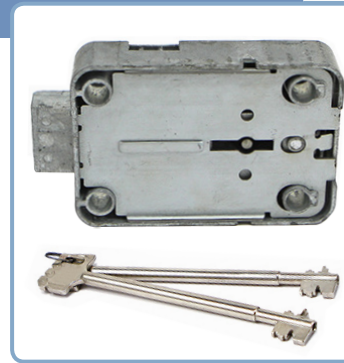


## MAUER

### MAUER 71111 PRESIDENT A 8 LEVER LOCKS

Kaba/Mauer 71111 President A lock with a pair of die cast keys. 8 Lever. These locks are new old stock and the lock body may have some slight oxidation. Imported from Germany.

- #MAUER71111-65 (65mm Keys).....\$49.95
- #MAUER71111-90 (90mm Keys).....\$49.95
- #MAUER71111-120 (120mm Keys).....\$49.95
- #MAUER71111-150 (150mm Keys).....\$54.95
- #MAUER71111-164 (164mm Keys).....\$54.95



## SECURAM SYSTEMS

### SAFELOGIC BASIC LOCK PACKAGES

SafeLogic Basic keypad with 0601, 0701 or 0801 safe locks. Features user and manager codes, 6-digit code length, wrong try penalty, enable/disable user code and more. Stainless steel construction, 9V battery operation.

- #SR-BASIC-CH-601 (Swing Bolt).....\$67.21
- #SR-BASIC-CH-701 (Dead Bolt).....\$109.08
- #SR-BASIC-CH-801 (Spring Bolt).....\$117.47



## SECURAM SYSTEMS

### PROLOGIC L02 LOCK PACKAGES

The ProLogic Series is an advanced safe lock system designed for commercial applications where a variety of security protocols must be followed. The L02 offers 30 codes, 1 super code, dual control, time delay, control of up to 4 locks and more.

- #SR-L02-CH-601 (Swing Bolt).....\$112.21
- #SR-L02-CH-701 (Dead Bolt).....\$154.07
- #SR-L02-CH-801 (Spring Bolt).....\$165.93



## BIG RED SAFE LOCKS

### CDL-3 LOCK PACKAGE, SPY GUARD DIAL/RING

Includes CDL-3 U.L. Group 2, 3-wheel lock body with spy-guard dial and ring. Spindle length to accommodate a 3.5" door thickness. Chrome, brass or black finish.

- #RW-CDL3-6012 (CH).....\$59.28
- #RW-CDL3-6013 (BR).....\$60.78
- #RW-CDL3-6014 (BLK).....\$57.28

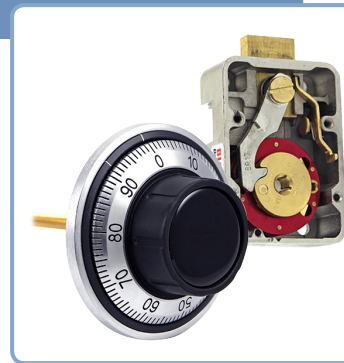


## BIG RED SAFE LOCKS

### CDL-3 LOCK PACKAGE, FRONT-READING DIAL/RING

Includes CDL-3 U.L. Group 2, 3-wheel lock body with front-reading dial and ring. Spindle length to accommodate a 3.5" door thickness. Chrome, brass or black finish.

- #RW-CDL3-7012 (CH).....\$55.29
- #RW-CDL3-7013 (BR).....\$58.28
- #RW-CDL3-7014 (BLK).....\$52.79



## LAGARD

### LGBASIC II SWING BOLT LOCK PACKAGE

Includes 4200M Swing Bolt Lock (Motor Blocking) and the highly popular 5715 keypad. Features include super master rest, manager + 1 user, wrong try penalty, low battery indicator and more.

- #LG3802-5715SC.....\$81.20



## LP LOCKS

### LP EL20 ROTO BOLT LOCK PACKAGE

Includes LP-EL20 Roto Bolt Lock, with KBL-10 textured black keypad. The lock can be mounted in all four mounting directions, and includes a 6-digit manager code and 1 user code. Installation accessories included.

- #LP-ROTO-LOCKPKG.....\$72.35



## SARGENT & GREENLEAF

### S&G 6730 LOCK PACKAGE, FRONT-READING DIAL/RING

Includes 6730-010 U.L. 768 Group 2, 3-wheel lock body with D300/R211 dial and ring. Black and white finish. Spindle length to accommodate a 3.5" door thickness. Change key and accessories included. Now available in discounted bundles of ten packages.

- #SG6730-100.....\$64.95
- #SG6730-100-10 (Pack of 10).....\$550.00



## SARGENT & GREENLEAF

### S&G 8410 LOCK PACKAGE, SPYPROOF DIAL & RING

Includes 8410-010 U.L. Group 1, 3-wheel lock body with D041 spy-proof dial and ring. Black and white finish. Includes change key.

- #SG8410-100.....\$253.98





## BLUEGRASS LOCKS

### 175-70 BIG/LITTLE NOSE, DOUBLE CHANGEABLE

Diebold 175-70 replacement lock. Double changeable design allows quick re-keying for renter and guard side. Guard side is set to a neutral position, so it can easily be changed to your existing guard key. Includes 2 random cut renter keys.

#BG-175-70-RH (Right Hand).....\$21.07  
#BG-175-70-LH (Left Hand).....\$21.07



## BLUEGRASS LOCKS

### 5700 DOUBLE BIG NOSE, DOUBLE FIXED

Mosler 5700 replacement lock compatible with existing Mosler levers. Features a universal guard setup to allow quick re-keying to bank's existing guard with minimal effort. Includes pair of random cut renter keys and 1 SM75 guard key per order upon request. Brass or Nickel finish.

#BG-5700-B (Brass).....\$21.07  
#BG-5700-N (Nickel).....\$21.07



## BLUEGRASS LOCKS

### 175-15 SINGLE BIG NOSE, FIXED

Direct replacement for Diebold 175-15. Single Nose safe deposit lock. Fixed Renter. Includes pair of renter keys and guard slide lever. Right hand or left hand.

#BG-175-15-RH (Right Hand).....\$36.06  
#BG-175-15-LH (Left Hand).....\$36.06



## BLUEGRASS LOCKS

### 175-90 SINGLE BIG NOSE, CHANGEABLE

Replacement for the Diebold 175-90 Single Nose Right Hand safe deposit lock. Changeable design allows for quick re-keying. Includes pair of random cut renter keys. Right hand or left hand.

#BG-175-90-RH (Right Hand).....\$27.14  
#BG-175-90-LH (Left Hand).....\$27.14



## SARGENT & GREENLEAF

### S&G 4545 DOUBLE CHANGEABLE, 1/2" NOSE

S&G 4500 Series Safe Deposit Locks are non-handed, allowing a single model to be mounted in either left- or right-hand doors. All models are UL listed. Double changeable models can be easily set to new keys without disassembly.

#SG4545-004.....\$23.49



## SARGENT & GREENLEAF

### S&G 4231 SY3 GUARD, DUAL NOSE

The S&G 4231 is designed for matchwork to the prolific Yale SY3 guard key to expand existing safe deposit installations. UL listed, dual nose, dual key operation locks have separate keyways for renter and guard keys. Right hand or left hand.

#SG4231RH (Right Hand).....\$21.33  
#SG4231LH (Left Hand).....\$21.33



## BULLSEYE S.D. LOCKS

### 9/16" FIXED RENTER, FIXED #C88 GUARD

U.L. Listed B500 Series by Bullseye Safe Deposit Locks. Fixed Renter, Fixed Guard, 9/16" Door (Guard #C88).

#B541.....\$19.00



## BULLSEYE S.D. LOCKS

### 3/8" FIXED RENTER, FIXED #P101 GUARD

U.L. Listed B500 Series by Bullseye Safe Deposit Locks. Fixed Renter, Fixed Guard, 3/8" Door (Guard #P101).

#B542.....\$21.00



## UPCOMING SCHEDULE

**GSA CERTIFIED SAFE & VAULT TECHNICIAN WITH GSA APPROVED INSPECTOR.** (10-day course, \$2,750\*). Includes X-10 Factory Certification and S&G Model 2740B Factory Authorized Training!

- July 15 - 26, 2019 **Class Full**
- September 9 - 20, 2019 **Class Full**
- November 11 - 22, 2019
- March 2 - 13, 2020

**GSA APPROVED CONTAINER INSPECTION COURSE (NEW INSPECTORS)** (3-day course, \$795\*).

- October 8 - 10, 2019

**GSA APPROVED CONTAINER INSPECTION COURSE UPDATE (RENEWING INSPECTORS).** (2-day course, \$550\*). Current GSA Inspector Renewal.

- October 8 - 9, 2019

**GSA CONTAINER IDENTIFICATION.** (1-day course, \$275\*). Highly recommended for ALL levels of experience before taking Inspection course.

- October 7, 2019

**KABA-MAS X-10 FACTORY CERTIFICATION.** (1-day course, \$275\*).

- October 11, 2019

**PROFESSIONAL LOCKSMITHING.** (10-day course, \$2,750\*).

- October 28 - November 8, 2019
- February 17 - 28, 2020 (Tentative Date)

**MECHANICAL SAFE LOCKS.** (2-day course, \$550\*).

- August 5 - 6, 2019

**COMPREHENSIVE SAFE LOCK MANIPULATION.** (3-day course, \$795\*).

- August 7 - 9, 2019

**NEUTRALIZATION & REPAIR OF GSA APPROVED CONTAINERS.** 2-day course, \$550\*.

- Course Dates TBA.

**PROFESSIONAL SAFE DRILLING.** (2-day course, \$650\*).

- Course Dates TBA.

**ELECTRONIC SAFE LOCKS.** (1-day course, \$295\*).

- Course Dates TBA.

**SAFE DEPOSIT LOCKS.** (1-day course, \$425\*).

- Course Dates TBA.

**TIME LOCKS.** (2-day course, \$595\*).

- Course Dates TBA.

**ADVANCED LOCK DEFEAT.** (5-day course, \$1,495\*).

- Course Dates TBA.

**TACTICAL CLASSES.**

Customized tactical classes are available to select military and law enforcement personnel. Options include Tactical Locksmithing (5-10 days), Tactical Automotive (3-5 days), Tactical Lever Locks (3-10 days) and Tactical Safe Locks (3-5 days). Call for more information.

*\*For first-time students only, a registration fee of \$25.00 will be added.*

## EXPERIENCE THE EXPERIENCED AT MBA USA.

MBA USA, a recognized leader in security training, currently employs three highly experienced instructors who have a wealth of knowledge to share. All have years of field experience in subjects as varied as the industry. MBA also partners with expert consulting instructors, including John Falle, Martin Newton and Ed Woods.



**MARK BATES**  
CML, CMST, ACE



**CHUCK BATCKE**  
CML, CPS, ACE



**ANDY DENNISON**  
CML, CMST, ACE



**JOHN FALLE**



**MARTIN NEWTON**  
CPS



**ED WOODS**  
CML, CPS, ACE



### CERTIFICATIONS:

- **CML:** Certified Master Locksmith
- **CPS:** Certified Professional Safe Technician
- **CMST:** Certified Master Safe Technician
- **ACE:** ALOA Continuing Education



**FULL EDUCATION INFO AT MBAUSA.COM**





200 ORCHARD DRIVE  
NICHOLASVILLE, KY 40356

PRSRST STD  
US Postage  
PAID  
Permit No. 850  
Lexington KY

# TOOLS & TRAINING FOR SECURITY PROFESSIONALS.

Sargent & Greenleaf® Digital Platform

# NexusIP™



Monitor, control, and view network activity in real-time. Easy to install and operate Internet Protocol (IP) locking system. WIFI connection.

- Pivolt Bolt Package
- Direct Drive Package
- Motor Retracted Dead Bolt Package
- Motor Retracted Push/Pull Dead Bolt Package

Product details on **Page 7**.



**MBA USA, INC.**

2019 QUARTER 3 CATALOG / (888) 622-5495 / MBAUSA.COM