

SecuRAM



SafeLogic Basic





Features

- 2 Users; 1 Manager, 1 User
- Penalty Time Lockout
- (1) 9V Battery – 10-20k cycles
- Can be used with any lock body





Stainless Steel

- Brass
- Chrome
- Nickel
- Black Chrome

Part # EC-0601A



Plated Poly

- Chrome
- Brass

Part #EC-0601A-PN



Stainless Steel

BackLit

- Brass
- Chrome
- Nickel
- Black Chrome

Part # EC-0601A-BL



Plated Poly

TopLit

- Chrome
- Brass

Part # EC0601A-PL



SafeLogic Basic

- Master Code; User Code
- Penalty LockOut
 - 4 Incorrect Codes
- Mechanical Reset Feature

- Default Codes
- Master Code: 1 1 1 1 1 1
- User Code: 1 2 3 4 5 6

Finger

Password

6 7 8

Delete

9 0 #





Code Change Process

- Enter Program Mode 0 0 0 0 0 0 Beep
 - Enter Existing Code 1 2 3 4 5 6 Beep
 - Enter New Code 6 5 4 3 2 1 Beep
 - Repeat 6 5 4 3 2 1 Beep
-
- New Code is Set
 - 3 Beeps means Code was not set successfully
 - Repeat code change process



Disable User Code

- Enter Master Code: 1 1 1 1 1 1-Hold 1Beep – 2Beeps
- Press: “2” 1Beep
- User Code is now Disabled



Enable User Code

- Enter Master Code: 1 1 1 1 1 1-Hold 1Beep – 2Beeps
- Press: “1” 1Beep
- User Code is now Enabled



Delete User Code

- Enter Master Code: 1 1 1 1 1 1-Hold *1Beep – 2Beeps*
- Press: "3" *1Beep*
- User Code is now Deleted



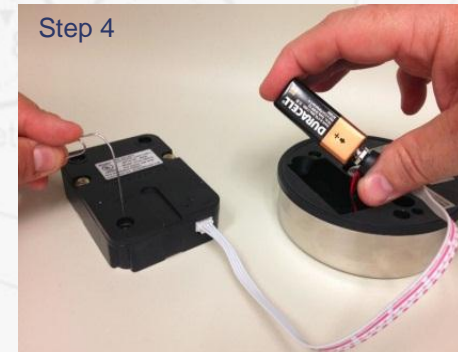
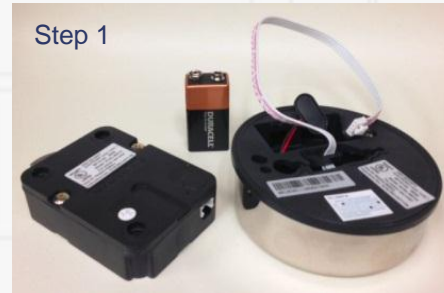
Create User Code

- Enter Master Code: 1 1 1 1 1 1-Hold 1Beep – 2Beeps
- Press: "1" 1Beep
- Enter User Code 1 2 3 4 5 6 1Beep
- Repeat User Code 1 2 3 4 5 6 1Beep
- 3 Beeps indicates an error, Repeat process

The Simple Mechanical Reset procedure is used to reset a lock that has been previously paired with an different model EntryPad. This procedure can also be used to set the lock back to factory default settings.

This procedure erases the previous pairing and sets the lock back to its original state.

- Step 1: Ensure that the lock, and EntryPad are not connected and that the battery is not connected to the EntryPad.
- Step 2: Find the reset hole on the back of the lock (under the QC sticker).
- Step 3: Using a poke tool, depress the reset button on the back of the lock 3 times. This discharges any latent energy within the locks capacitors.
- Step 4: Now the part that requires 3 hands... Depress the reset button and hold it in its depressed position. While the reset button is depressed, connect the lock cable to the lock and then connect the battery to the entrypad.



1. Power

- Make sure 9V Battery is new

2. Side Bolt Pressure

- Relieve side bolt pressure

3. Lock Cable

- Inspect Lock cable

4. EntryPad

- Functioning

