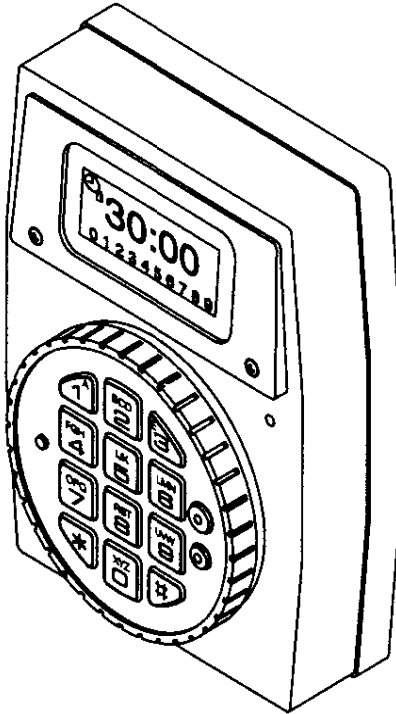




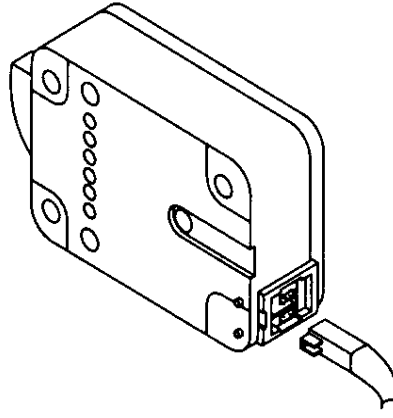
# DIGIGARD

## SETTING SWITCHES & ACTIVATING FEATURES

**4000 Push Button Entry**

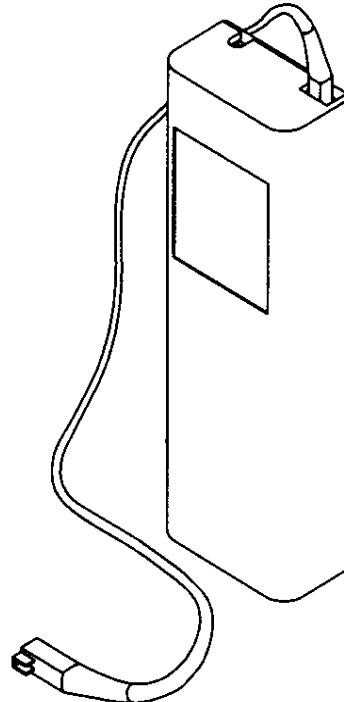
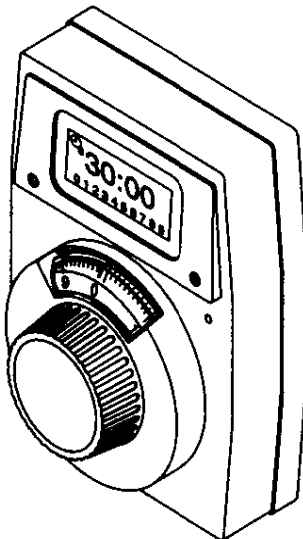


- 5010 Swingbolt Lock (RH)**
- 5015 Swingbolt Lock (LH)**
- 2870 Motor Lock (Deadbolt)**
- 2888 Motor Lock (Springbolt)**
- 4030 Redundant Mechanical Lock with Dial & Push Entry**



- 4001 Large Battery Box (Standard)**
- 4002 Large Alarm/Battery Box (Optional)**

**4005 Dial & Push Entry**



**FEATURES** *Switch Programmable* - See Switch Diagram on back page  
(May be added/changed at any time, with restrictions as noted. Also see DigiGard Operating Instructions for more information.)

## **NUMBER OF SUB-USERS**

Primary User (User#A) plus Sub-User numbers range from 1 to 8.

- If number of users switches are decreased after sub-user combinations assigned, higher user number combination(s) must be deleted before feature activated. (See Activating Features procedure.)

**Example:** Sub-User numbers 1 and 7 previously assigned. Number of users then decreased to six. User #7 is higher and must be deleted before activating feature.

## **MANAGER MODE**

User #0 will appear on LCD if feature is active. **Manager may perform the following:**

- Add, Temporarily Disable, or Remove sub-users
- Set Time Lock
- Run Audit Trail

## **DUAL COMBINATION**

Switches must be programmed for minimum of two sub-users.

- Any two combinations required to open.

## **SILENT SIGNAL ALARM**

*Optional Alarm/Battery Box Required*

- Duress signal if last number of combination(s) entered one number higher or one number lower.

## **TIME LOCK**

Lock from 1 minute to 99 hours, 59 minutes (00:01 to 99:59).

- If Time Lock activated, cannot turn OFF during Lock period.

## **TIME DELAY**

*"Delay" time period: 1-99 minutes*

*"Open" time period: 1-19 minutes*

- Delay Time period may be increased at any time.
  - Open Time period may be changed at any time.
-

## ADDITIONAL FEATURES *Not Switch Programmable*

### WRONG TRY PENALTY

- Entry of four consecutive invalid combinations, 5-minutes delay period will start. Lock signals at 10 second intervals.
- At end of penalty period, entry of two more consecutive invalid combinations, 5-minute delay period will restart.

### AUDIT TRAIL

*Only Primary and Manager User have access.*

- Stores all user operations up to latest 99 events.

### SETTING SWITCHES AND ACTIVATING FEATURES

*(See Switch Diagram on back page)*

- Turn **ON** switch(es) to select feature(s) or desired Delay/Open time periods.
  - Number of Sub-Users and Time Delay time features: Add switch values together for desired total. **DO NOT EXCEED MAXIMUM.**
- **INITIAL SET-UP:** Enter factory-set primary combination: 1-2-3-4-5-6
- **FIELD SET-UP:** Enter Digi-Gard primary combination.

- Hold down last digit of combination until LCD displays:



denotes primary user

- **PRESS 0.** If switch settings are correct, LCD displays:
  - Lock is reconfigured.

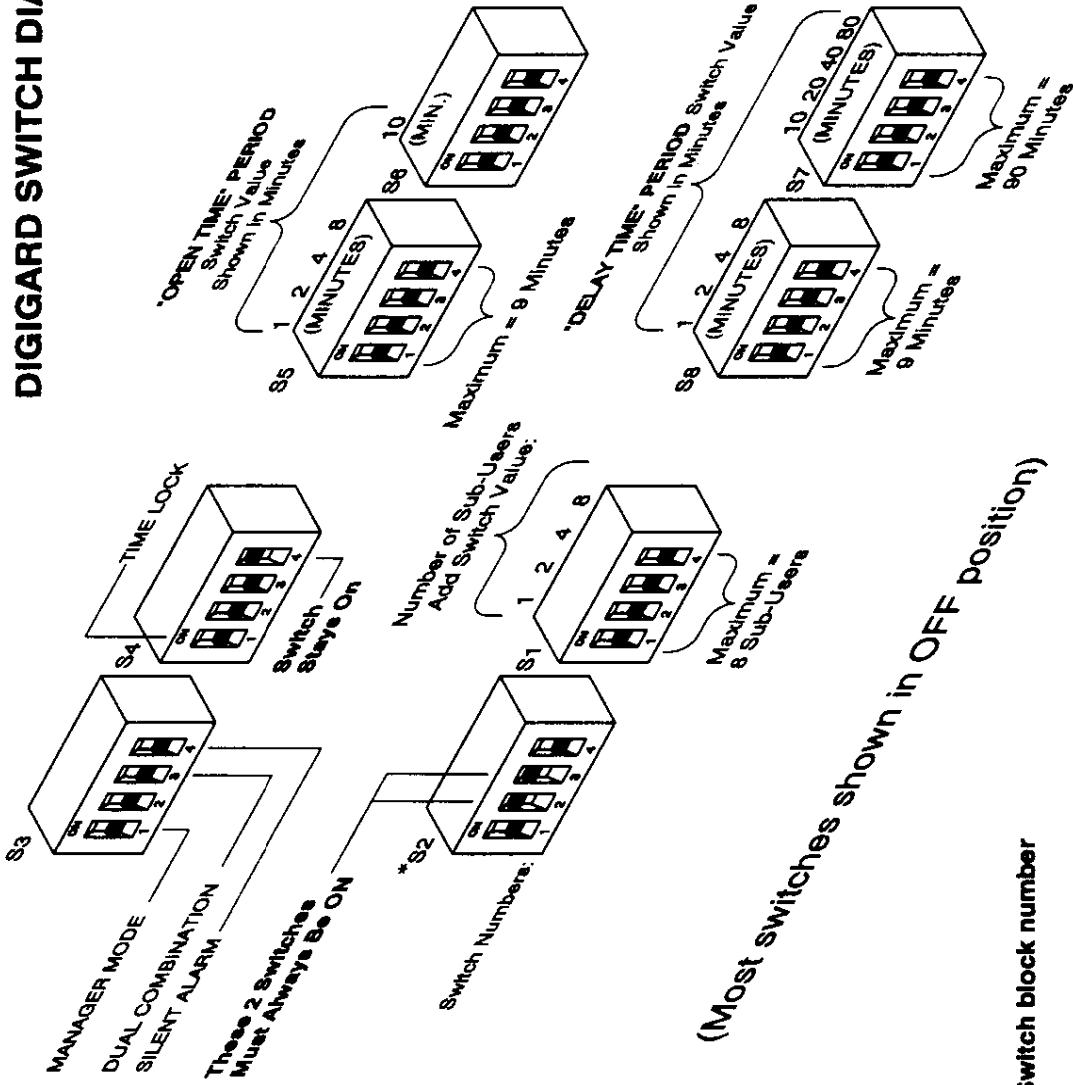


- During SET-UP, if switches are set incorrectly, after pressing 0, LCD displays:



- Check switch settings, cable connections, and restart ACTIVATING FEATURES procedure.
  - If Time Delay is active, cannot turn OFF nor decrease Delay Time period until Open Time period.
-

# DIGIGARD SWITCH DIAGRAM



(Most switches shown in OFF position)

\*Switch block number

